

Native of Haiti
Pelege Lareus



Hand to Hand Foundation

Helping Hands Reaching from America to Haiti

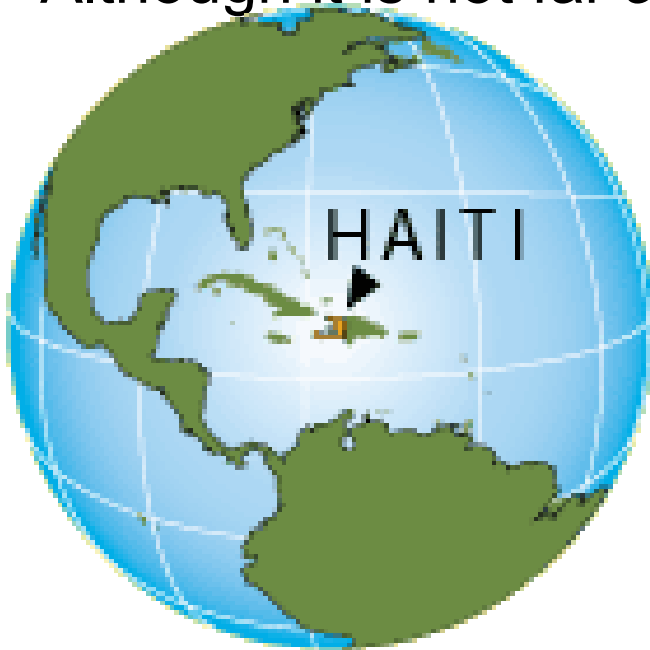
Today's Discussion

- My Life in Haiti
- My Journey
- Starting a Non-Profit
- Current Situation
- What Hand to Hand is doing to help
- What you can do to help!



Where is Haiti?

- Haiti is only 750 miles southeast of Florida
- Poorest country in the western hemisphere
- Although it is not far away it is worlds apart



Baie-du-Mesle, Haiti



Baie-du-Mesle

I'm from Baie-du-Mesle

- On the south coastline
- East of Les Cayes
- 3 hours south Port-au-Prince



My Life In Haiti

- Born in Baie-du-Mesle, Haiti.
- Had 7 siblings. Father delivered all of us at home.
- Attended school with limited resources.
- Helped family with farming, fishing and fetching water.
- Grew up in a Christian home.



Positives of Life in Baie-du-Mesle

- Grew up along ocean
 - Fishing, diving, swimming and boating
- Grew our own food
 - Fresh oranges, mangos, coconuts, avocados
- Beauty of nature



Hand to Hand Foundation

Negatives of Life in Baie-du-Mesle



Example of a house

- No electricity or running water
- No hospital or doctors
- No police, fire or emergency squads



Hand to Hand Foundation

Negatives of Life in Baie-du-Mesle

Continued



Hand made canoes and
fishing nets

- Harsh sides of nature
- Strong storms and flooding
- Swarms of mosquitoes
- Hard work of growing crops
- Hard work of daily life



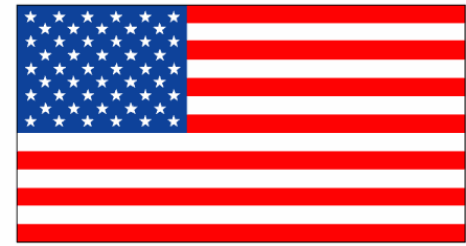
My Journey



- Refugee boat at age 13
 - 150 people
 - 2 days in rough seas
-
- Boat picked up by US Coast Guard
 - Spent 3 months in tents in Guantanamo Bay, Cuba
 - Went through interview process for our immigration status
 - Some were sent back to Haiti



My Journey in US



- Miami, Florida
- Sent by Immigration Department to Columbus, OH
 - Family friends in Short North
 - 3 people I lived with returned to Florida
 - Stayed with a family who spoke Haitian Creole
- Lived in foster homes in Newark, OH
 - Started 7th Grade in Newark
 - Friends and American family from Newark, OH



My People, my village

Mission to help people of Baie-du-Mesle

Hand to Hand 501(c)3

4 years ago with help and support of friends and Nationwide co-workers

- 8 months to complete IRS approval process
- Website
www.HandtoHandHaiti.com
- Board of directors

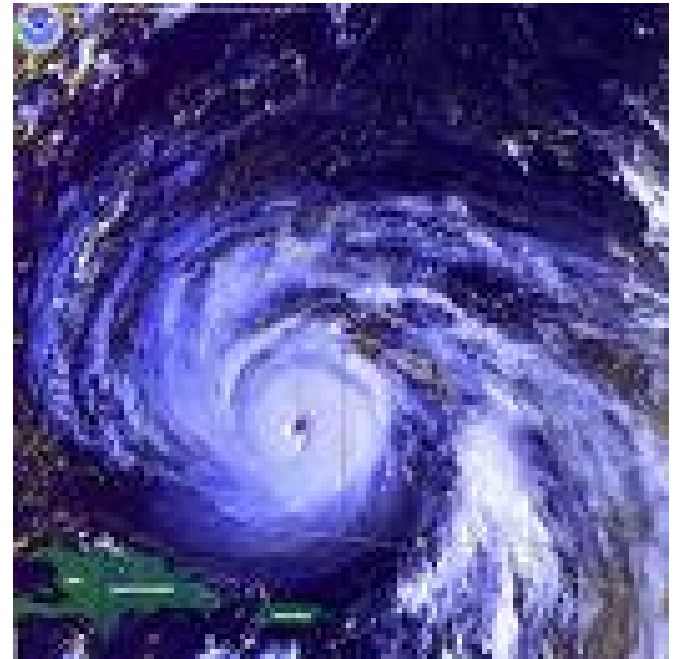


Hand to Hand Foundation

Before Earthquake

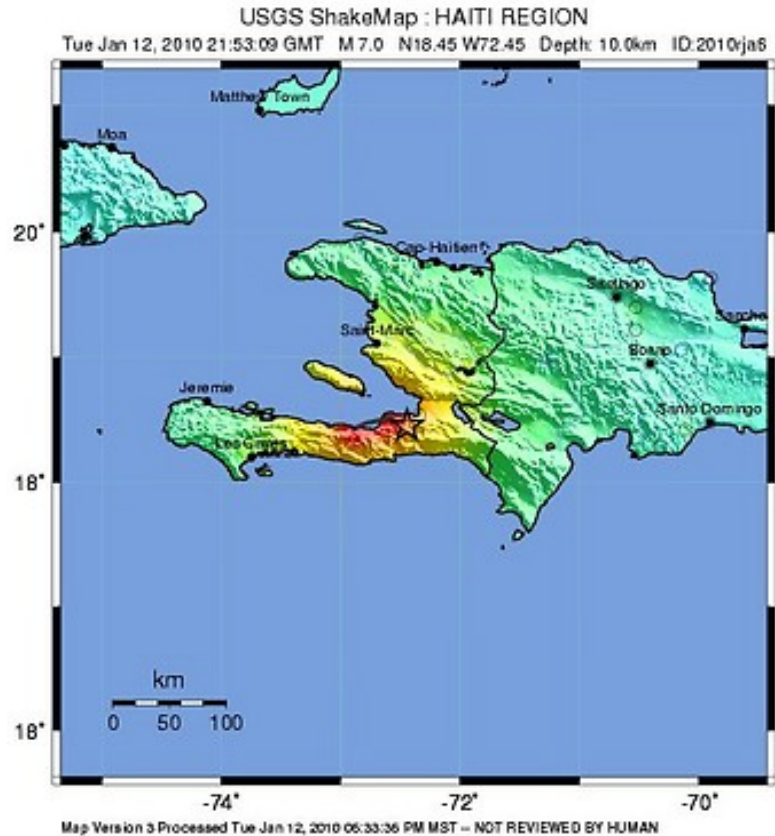
Growing crops and fishing already reduced:

- Climate change
- Deforestation and soil erosion
- Drought, flooding, hurricanes
- Schools of sardines, shrimp and other fish have disappeared



Hand to Hand Foundation

Post Earthquake Situation



| PERCEIVED SHAKING | Not felt | Weak | Light | Moderate | Strong | Very strong | Severe | Violent | Extreme |
|------------------------|----------|---------|---------|------------|--------|-------------|----------------|---------|----------------|
| POTENTIAL DAMAGE | none | none | none | Very light | Light | Moderate | Moderate/Heavy | Heavy | Very Heavy |
| PEAK ACC.(%g) | <.17 | .17-1.4 | 1.4-3.9 | 3.9-9.2 | 9.2-18 | 18-34 | 34-65 | 65-124 | >124 |
| PEAK VEL.(cm/s) | <0.1 | 0.1-1.1 | 1.1-3.4 | 3.4-8.1 | 8.1-16 | 16-31 | 31-60 | 60-116 | >116 |
| INSTRUMENTAL INTENSITY | I | II-III | IV | V | VI | VII | VIII | IX | X _s |

- International news and aid for Port-au-Prince
- Entire country suffering, including Baie-du-Mesle
- Limited food supplies already, now more scarce
- People are leaving Port-au-Prince and returning to their native villages
- Rainy season is already beginning, compounding problems



People of Haiti are Survivors



Hand to Hand Foundation

Thank You!



Open Discussion

Pelege's contact information:

- www.HandtoHandHaiti.com
- Pelege78@hotmail.com
- 614-592-0798



Hand to Hand Foundation